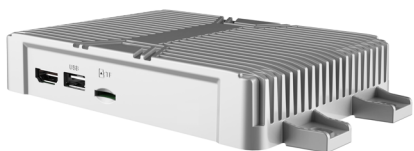


# DHI-DAE-PANA-S02-04

## 360° Surround View Terminal



### System Overview

360° panoramic view terminal is a vehicle-mounted product used for blind spots detection. The device adopts panoramic mosaic splicing algorithm and image equalization algorithm to achieve wide-angle picture splicing around the vehicle, and the driver can easily judge the surrounding situation of the vehicle by observing the display inside the vehicle.

### Functions

#### 360° Surround View

The device supports 2D/3D round view mode display and switching, various types of 1-12 meters vehicle length round view fusion and vehicle model switching; the time of calibration configuration is short.

#### BSD

Supports 4 channels of blind spots detection at the same time. The monitoring of blind spots in front and back vision is adaptive according to gear position

#### Multiple Ports

Supports 2 channels of RS485 for sound and light alarm, 1 RS232, 1 CAN, which are easy to connect to connect with external devices and vehicle.

### Highlights

- Supports 4 channels of 720P camera input.
- Supports AHD/CVBS/HDCVI/HDMI output.
- Supports 2D/3D multi-view switching.
- Supports connection to left turn, right turn, reverse hard signal.
- Supports BSD blind spot detection around the vehicle.
- Supports 2 channels of sound and light alarm.

### Technical Specification

#### System

Main Processor	Industrial-grade embedded microcontroller
Operation System	Embedded LINUX

#### Audio and Video

Channel Number	4-ch analog camera, adaptive HDCVI, AHD, TVI and CVBS access can be configured.
Encoding resolution	Channels for surround view splicing: 720P Others: D1
Bit Rate	32Kbps-2048Kbps
Stream Type	Video stream, composite stream
Frame Rate	PAL: 1-25 fps
Video Output	1×AHD (7-pin aviation connector) 1×CVBS (7-pin aviation connector) 1×HDMI
Image Division	1/4/8/9 screen
OSD Overlay	Channel, time, license plate
Image Quality	Image quality adjustable across six levels

#### Playback

Recording Type	Auto recording, manual recording, timed recording Priority: Manual recording > Timed recording
Channel	4 channels
Backup	Network backup
Playback Mode	General Playback

#### Upgrade

Device Upgrade	WEB, USB, remote platform, upgrade tool
----------------	---

#### Network

Mobile Phone	iOS, Android
Wi-Fi	External APP can be connected and work as AP.

#### Storage

TF Card	1 (up to 512G)
---------	----------------

#### Sensor

Gyroscope	Built-in gyro, supports rollover, collision, sharp acceleration/deceleration/turn.
-----------	--

External Interface

Alarm Input	3-ch alarm, 1-ch pulse speed measuring
RS-232	1
RS-485	3
USB Port	Front panel: 1 × USB 2.0 Rear panel: 1 × USB 2.0 transferred through EXTEND port
HDMI	1
Pulse Counting	1
Network Port	1 channel for front RJ45 (1000 Mbps)
CAN	1

Alarm

Common Alarm	Local alarm, manual alarm
Exception Alarm	Low Space, Illegal Login, ACC Power off, Over Speed, Low Speed, Collision, Turnover, Rapid Turn, Rapid Speedup, Rapid Slowdown, Low Battery Safety Exception, Network Security Exception
Alarm Linkage	Log recording, surround view switch

General

Power Supply	DC 12V/24V, Built-in UPS (Enables system protection in normal power cut-off and in under-voltage of vehicle accumulator).
Power Consumption	7.2W (without any peripheral)
Operating Temperature	-30°C to +70°C (-22°F to +158°F)
Operating Humidity	10%–90%
Dimension	151.7mm×103.7mm×29mm (5.97" ×4.08" × 1.14")
Weight	489g (1.08 lb)

Dimensions (mm[inch])

